



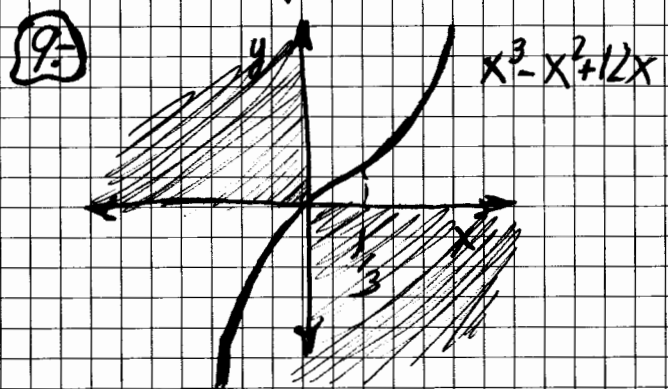
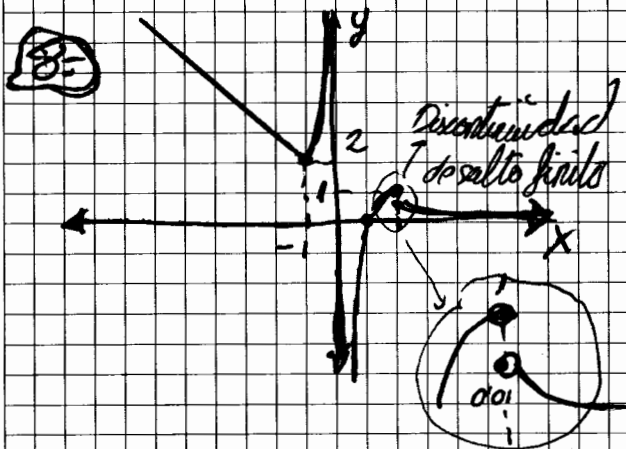
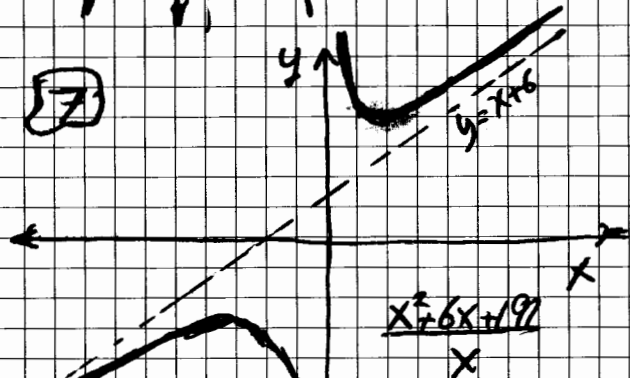
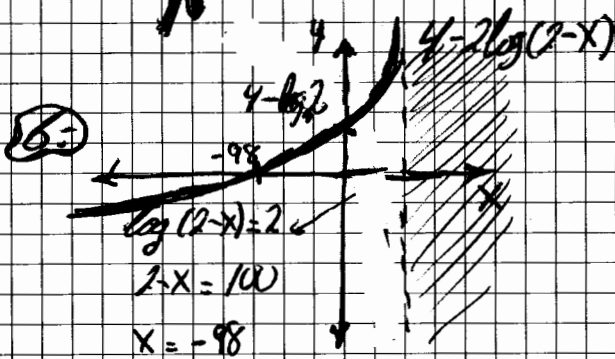
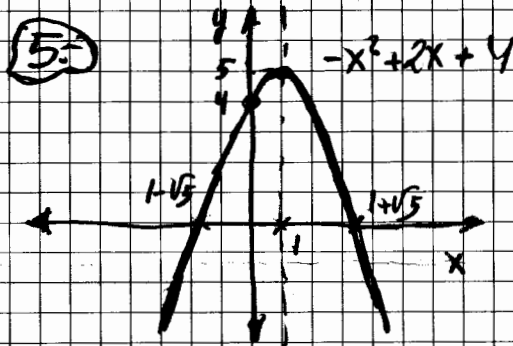
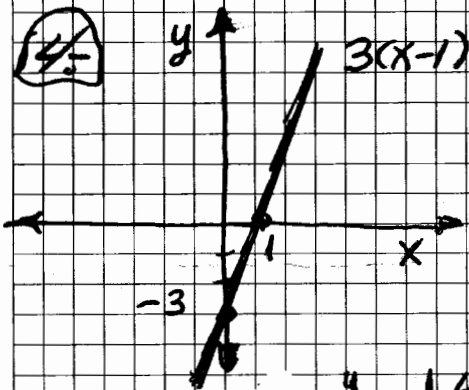
COLEGIO ALMA'S
bilingual school

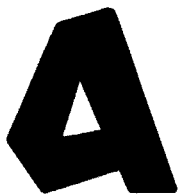
APELLIDOS Y NOMBRE: Corrección Control
CURSO: 1º Bachillerato N° 2ª Convocatoria
FECHA: 31-01-2018 ASIGNATURA: Matemáticas I

1) $\frac{5i^8 + 3i^3}{2 - i^2} = \frac{5 - 3i}{1+i} \cdot \frac{1-i}{1-i} = \frac{5 - 5i - 3i + 3}{1+1} = \frac{2 - 8i}{2} = \boxed{1 - 4i}$

2) $\left(\frac{1}{2} + \frac{\sqrt{3}i}{2}\right)^6 = \left(\frac{1}{3}\right)^6 = 1^6 \frac{6\pi}{2} = 1^{2\pi} = \boxed{1}$

3) $\sqrt[5]{16\sqrt{3} - 16i} = \sqrt[5]{32 \frac{11\pi}{6}} \rightarrow \boxed{2 \frac{11\pi}{30}, \frac{23\pi}{30}, \frac{35\pi}{30}, \frac{47\pi}{30}, \frac{59\pi}{30}}$





COLEGIO ALMA'S
bilingual school

APELLIDOS Y NOMBRE:

CURSO: N°

FECHA: ASIGNATURA:

