

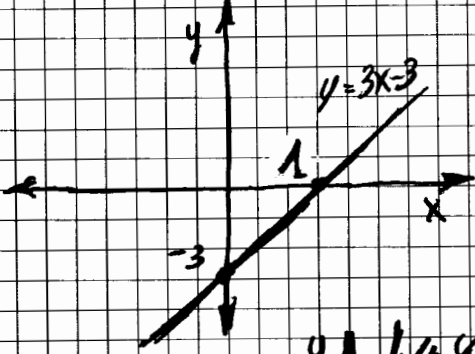


COLEGIO ALMA'S
bilingual school

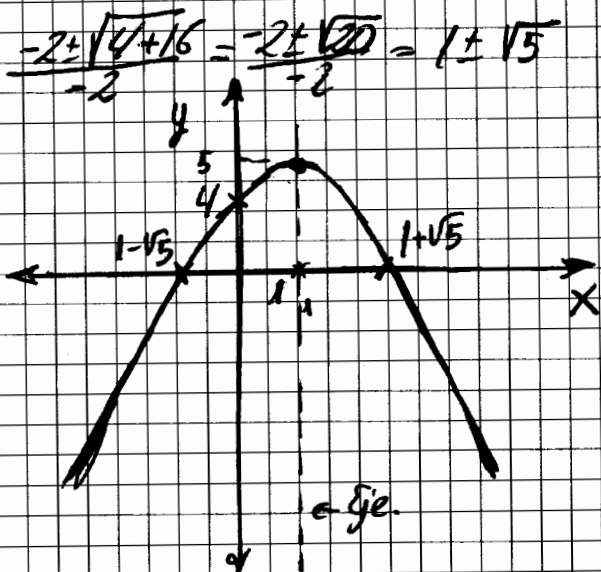
APELLIDOS Y NOMBRE: Corrección Control 1º
CURSO: 2º Bachillerato Nº 2ª Evaluación
FECHA: 24-Enero-2018 ASIGNATURA: Matemáticas

U.S.S.2

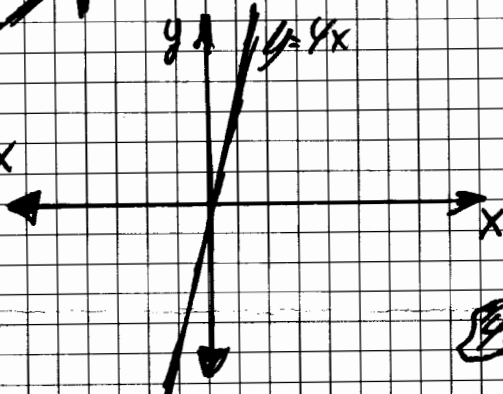
1) $y = 3(x-1) = 3x-3$



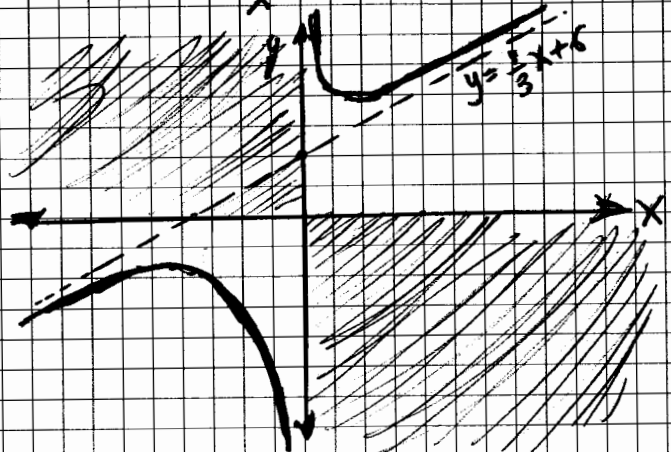
2) $y = -x^2 + 2x + 4 \rightarrow \Delta$ $ge: x=1$
Vertice: $y=5$



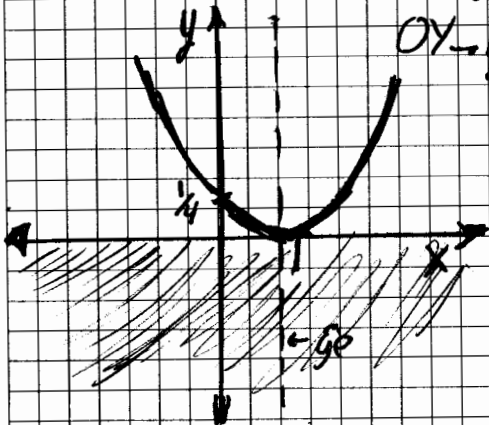
3) $y = 4x$



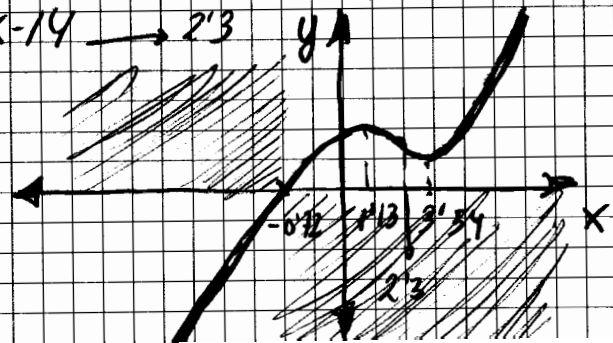
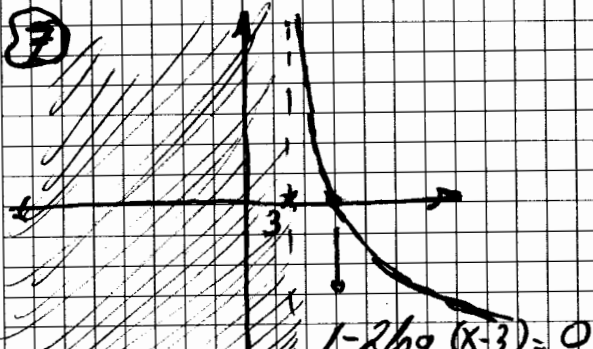
4) $y = \frac{1}{3}x^2 + 6x + 192$



5) $y = \frac{(x-1)^2}{4}$ $ge: x=1$
Vertice $y=0$
OY $\rightarrow y = 1/4$



6) $y = x^3 - 7.5x^2 + 12x + 13 = 0 \rightarrow -0.72$
 $y' = 3x^2 - 15x + 12 = 0 \rightarrow 3.54, 1.83$
 $y'' = 6x - 15 \rightarrow 2.3$





COLEGIO ALMA'S
bilingual school

APELLIDOS Y NOMBRE:

CURSO: N°

FECHA: ASIGNATURA:

